

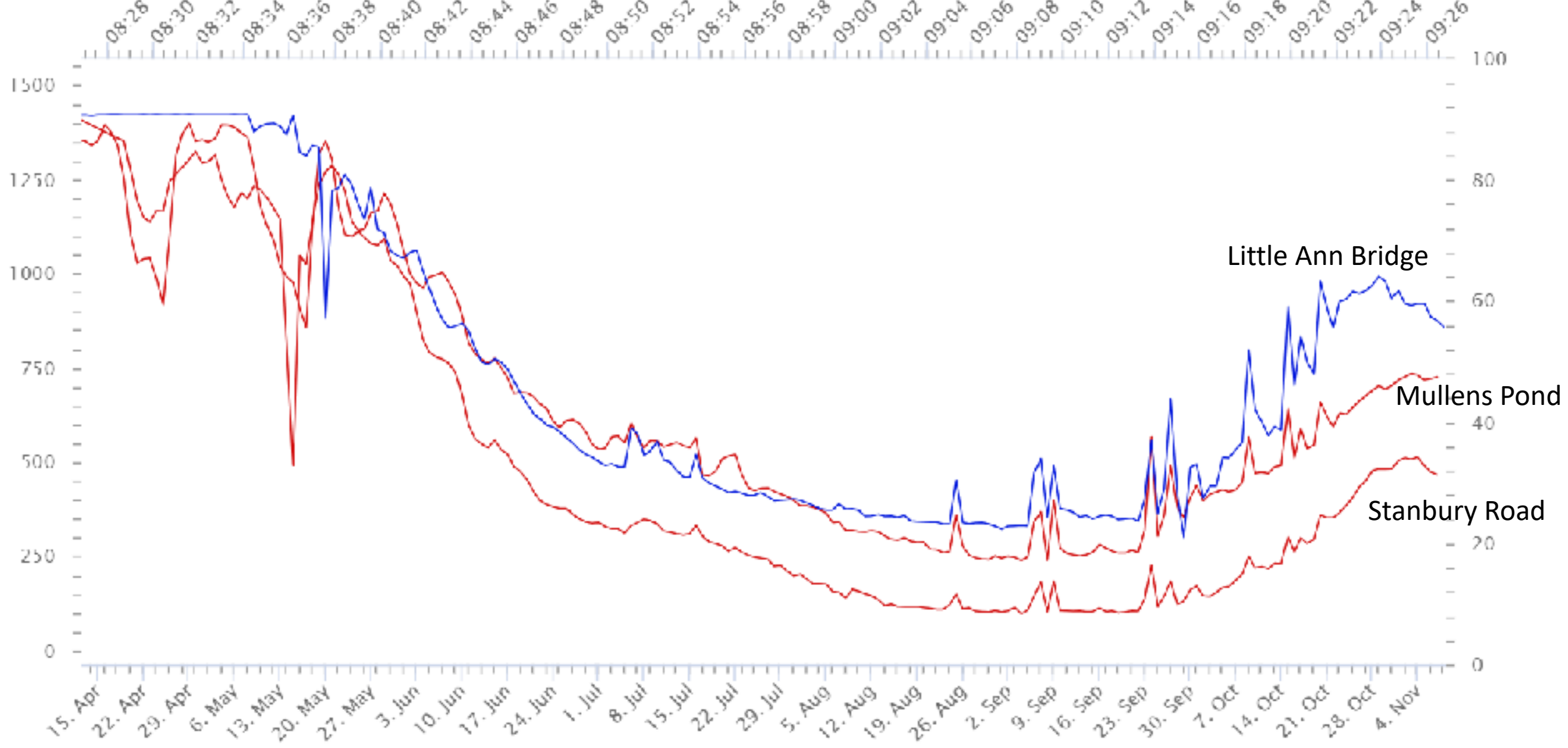
Pan Parish Monitoring

8.11.24

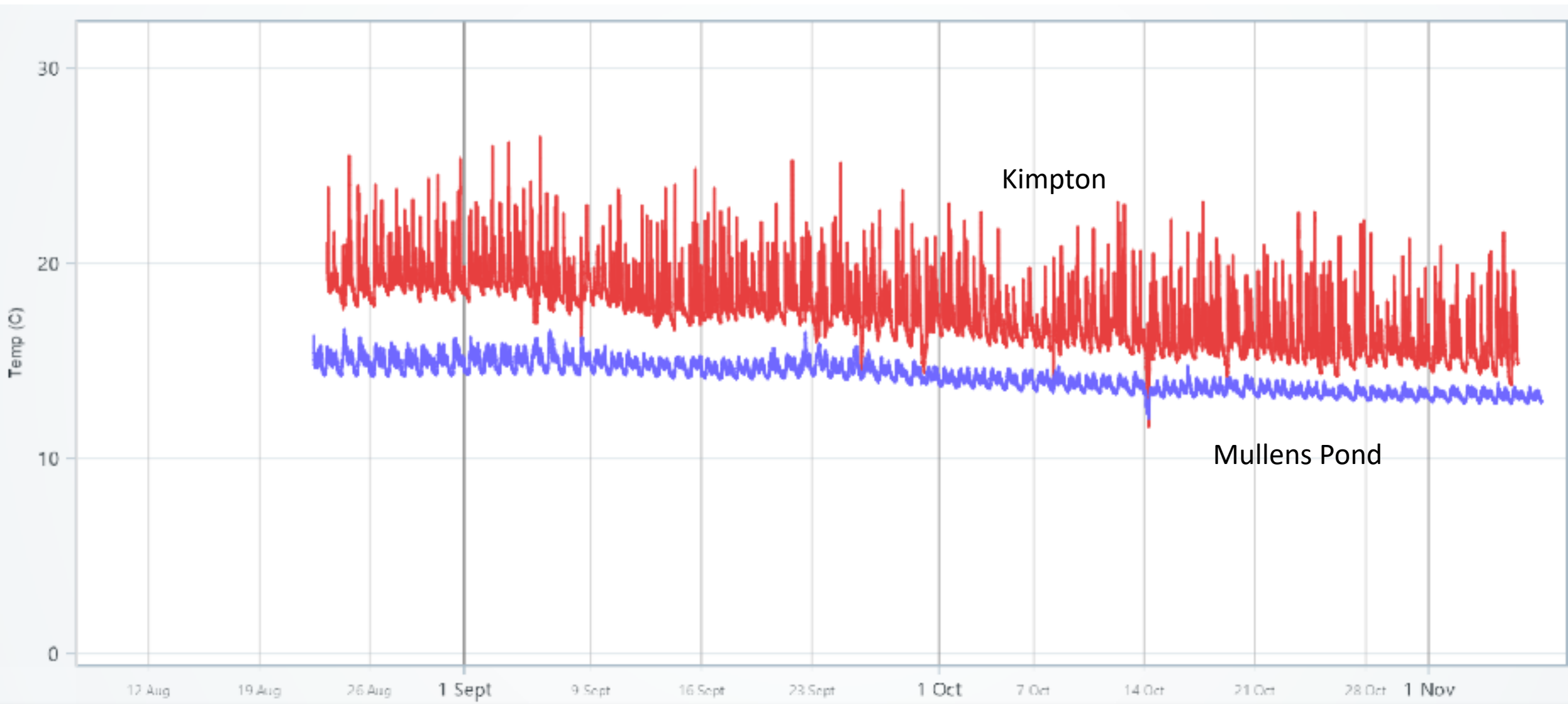
Monthly GW levels (m AOD or Above Sea Level)

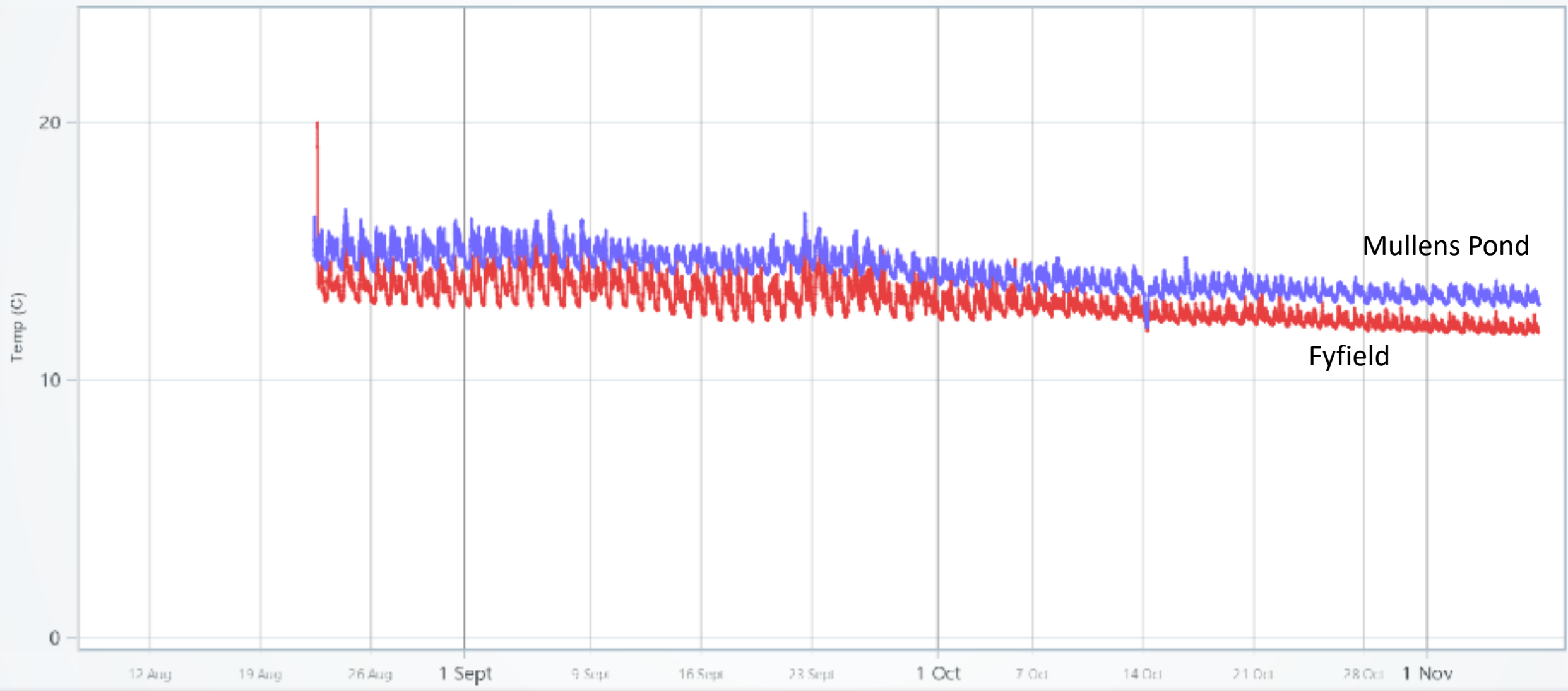
Week	Ampert Rainfall (mm)	Clanville Gate* (101.55 AOD)	Change	High View Kilmington	Change	Stanbury Road (76.63 m AOD)	Change	Mullens Pond (69.35 m AOD)	Change	Monaxton (62.52 m AOD)	Change
6/1/23	22.0	81.07	↑	82.71	↑	-	-	-	-	-	-
3/2/23	88	85.55	↑	85.30	↑	78.11	-	69.03	-	61.80	-
3/3/23	6.2	85.45	↓	84.88	↓	78.04	↓	68.98	↓	61.68	↓
7/4/23	97.0	86.01	↑	85.75	↑	76.11	↑	69.06	↑	61.74	↑
5/5/23	59.2	86.87	↑	85.88	↑	76.14	↑	69.07	↑	61.81	↑
2/6/23	33.0	86.97	↑	85.50	↓	76.14	=	69.09	↓	61.75	↓
7/7/23	42.3	85.46	↓	84.00	↓	76.10	↓	68.93	↓	61.60	↓
4/8/23	135	84.58	↓	83.50	↓	76.05	↓	68.89	↓	61.57	↓
1/9/23	40	83.86	↓	83.83	↑	76.00	↓	68.87	↓	61.56	↑
6/10/23	90.5	82.68	↓	82.73	↓	75.94	↓	-	-	61.65	↑
3/11/23	212.6	84.27		83.85	↑	76.21		-	-	61.91	
1/12/23	84.0	86.77	↑	86.00	↑	76.22	↑	-	-	61.92	↓
5/1/24	190	90.08	↑	87.25	↑	78.34	↑	-	-	61.98	↑
								Haydown Fm (75.4 m AOD)			
2/2/24	42	90.68	↓	86.88	↓	76.33	↑	74.12	↓	61.80	↓
1/3/23	128	91.05	↑	87.21	↑	78.33	↑	74.13	↑	61.94	↑
5/4/24	149.2	91.33	↑	87.40	↑	76.36	↑	74.19	↑	62.00	↑
3/5/24	80.3	90.50	↓	86.83	↓	76.27	↓	74.10	↓	61.91	↓
7/6/24	49.5	88.74	↓	86.03	↓	76.16	↓	73.60	↓	61.75	↓
5/7/24	16.8	87.03	↓	84.92	↓	76.09	↓	73.56	↓	61.67	↓
2/8/24	2.0	85.58	↓	84.01	↓	78.03	↓	73.40	↓	61.52	↓
6/9/24	29.0	83.89	↓	82.90	↓	75.90	↓	73.23	↓	61.39	↓
4/10/24	25.2	83.30	↑	83.78	↑	76.07	↓	73.42	↑	61.60	↓
1/11/24	4.0	84.67	↑	84.89	↑	76.16	↓	73.74	↑	61.71	↑
8/11/24	0.9	84.71	↑	84.79	↓	76.14	↓	73.74	=	61.60	↓

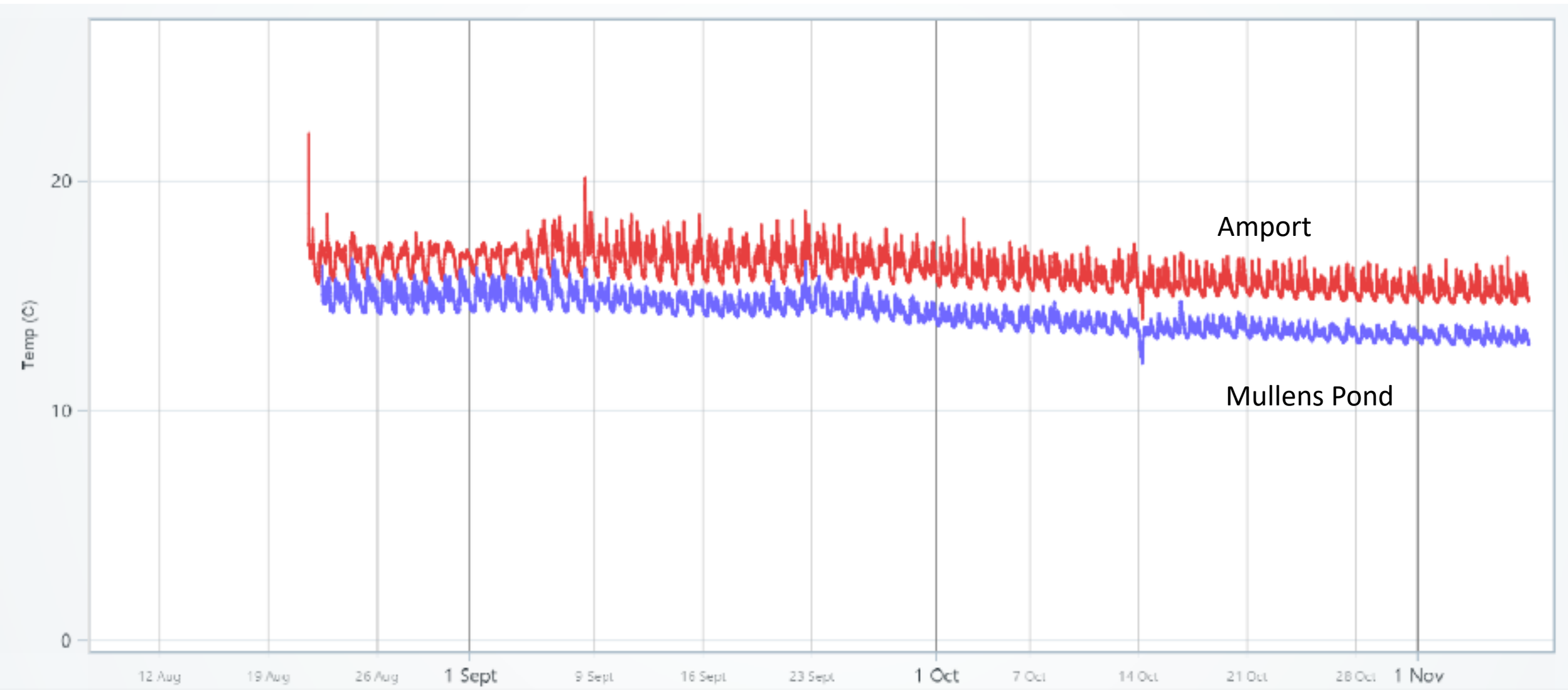
Pump runs

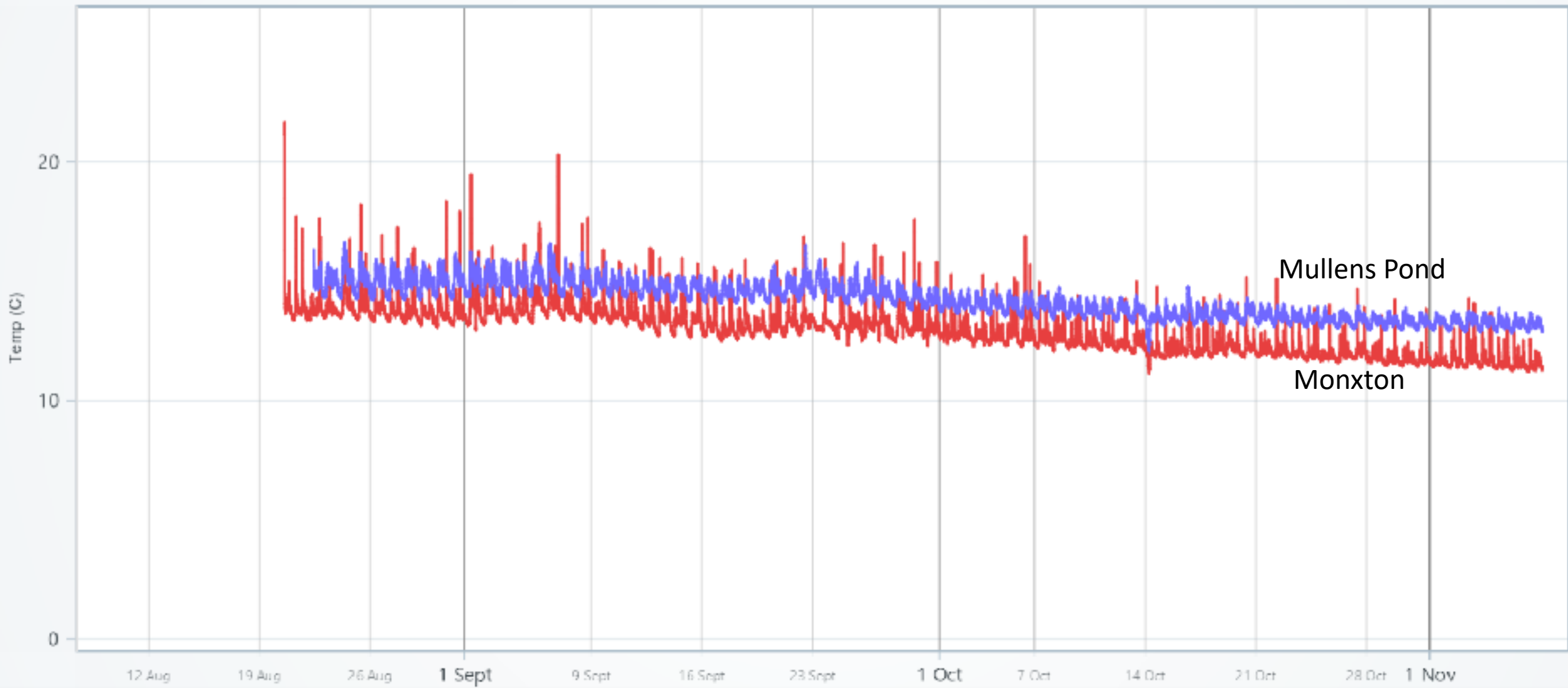


Fri Apr 12 2024









Mullens Pond

Monxton