

NEIGHBOURHOOD PLAN VISION STATEMENT (SUMMARY)

rural village remaining an attractive, independent settlement;
preserve heritage assets, listed buildings and conservation area;
village set in unspoilt, tranquil and accessible countryside;
an excellent quality of life for residents, visitors and workers.

A NEIGHBOURHOOD PLAN

Our vision for the future of our Village
Becomes a statutory planning document
Used to determine planning applications
Goodworth Clatford goes further – a holistic approach
Content determined via:
 Questionnaire results
 Community led consultation
Culminates in a Referendum

INTRODUCTION

Parish Council Led Initiative

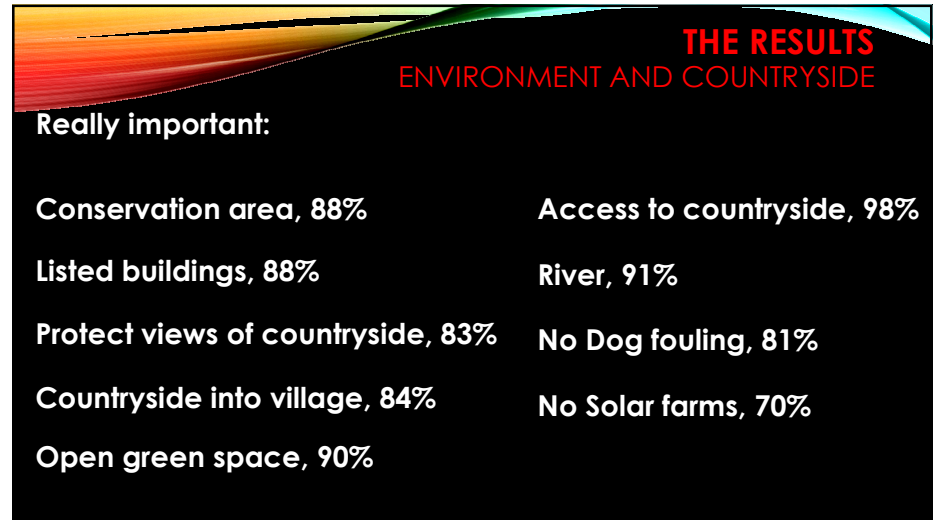
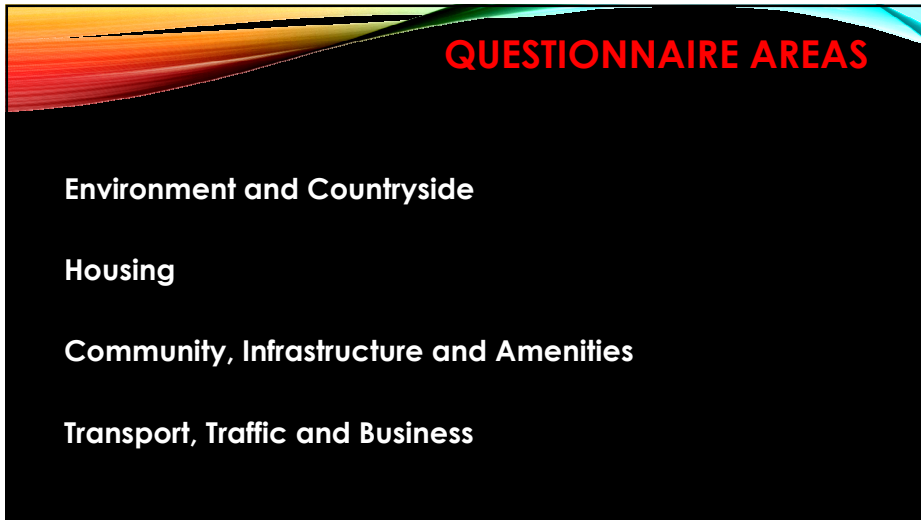
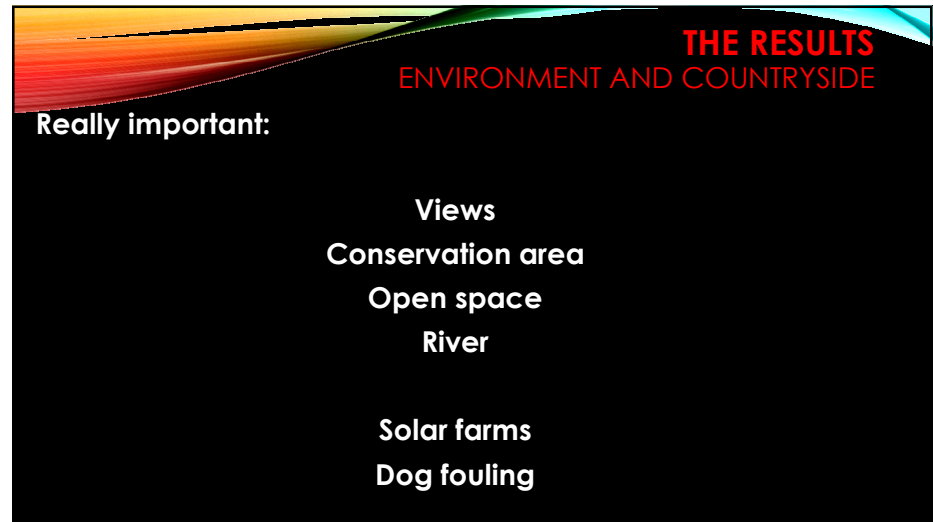
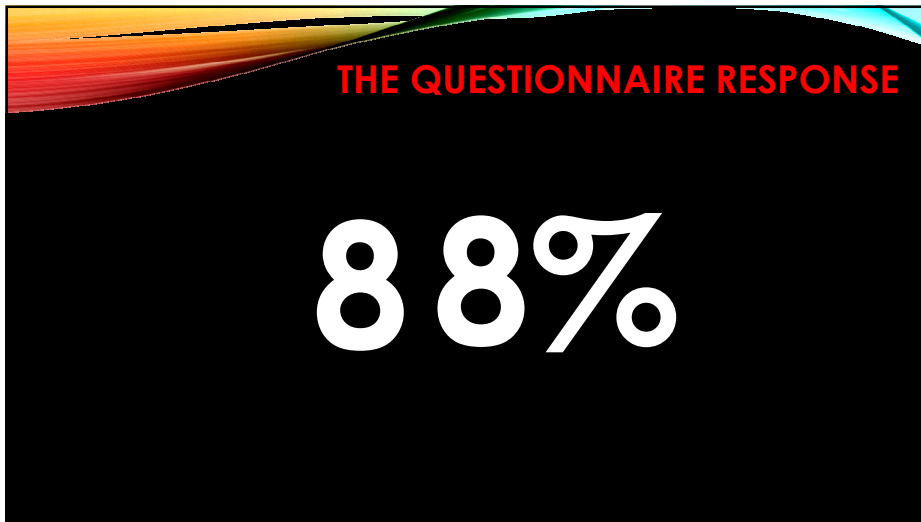
Steering Group

Ros Stockdale
Bob Houghton
Geoff Scard
Peter Kiddle

Community Implemented

THE QUESTIONNAIRE

Paper and on-line version produced
9 sections
113 aspects explored
15 comments areas
638 delivered to Village voters
Most responded willingly!



THE RESULTS HOUSING

Really important:

- Just build a few more houses
- Settlement boundary
- Village gap
- Rural
- Style of housing

- Housing estates
- Sewage

THE RESULTS COMMUNITY, INFRASTRUCTURE AND AMENITIES

Really important:

- Pubs
- Part of a community
- Village club
- Shop and Post Office
- Footpaths

- Sewage and flooding

THE RESULTS HOUSING

Really important:

Just build a few more houses, 91%	Village gap, 90%
Build 20 houses over 15 years, 82%	Building styles, 77%
Ignore the settlement boundary, 11%	Rural, 98%
Existing village size retained, 84%	Protect open aspect, 89%
More affordable Council homes, 38%	More starter homes, 53%

THE RESULTS COMMUNITY, INFRASTRUCTURE AND AMENITIES

Really important:

Pubs, 89%	Foot paths, 94%
Part of a community, 95%	Church, 84%
Village activities, 95%	School, 81%
Village club, 79%	Recreation ground, 81%
Shop, 92%	Sewage, 66%
Post Office, 90%	Flooding, 70%

THE RESULTS
TRANSPORT, TRAFFIC AND BUSINESS

Really important:

- Quiet Village
- Vehicle speed
- Parking
- Internet
- Mobile signal

THE WAY FORWARD
WORKING GROUPS

- Environment and Countryside
- Housing
- Community, Infrastructure and Amenities
- Transport, Traffic and Business

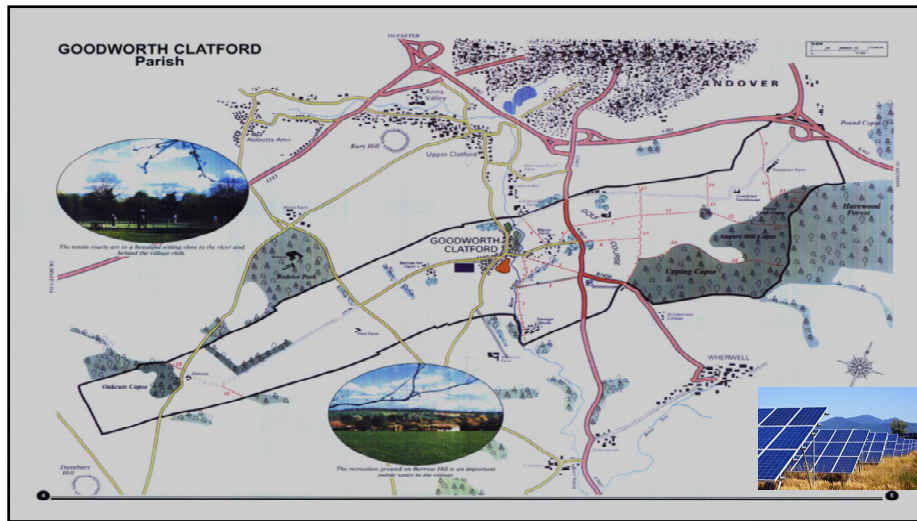
THE RESULTS
TRANSPORT, TRAFFIC AND BUSINESS

Really important:

- Quiet Village, 97%
- Vehicle speed, 75%
- Road maintenance, 81%
- Parking, 59%
- Internet, 84%
- Mobile signal, 82%

SECTOR GROUPS

- Environment and Countryside – Geoff Scard



ENVIRONMENT AND COUNTRYSIDE WORKING GROUPS

Environment Pollution (air, noise, light), litter, fly tipping, dog fouling, flooding, sewage

Countryside Landscape and natural environment, views to be protected, land classification, protect countryside features (public green space, woodlands, rights of way, hedgerows, rivers and streams), maintain biodiversity

ENVIRONMENT AND COUNTRYSIDE

Rural atmosphere	Street lighting
Protect views	Pollution
River Anton	Solar Farms
Open/green spaces	Working farms
Public Footpaths/bridleways	Fly tipping/ litter
	Dog fouling

SECTOR GROUPS

Transport, Traffic and Business – Ros Stockdale

TRANSPORT, TRAFFIC AND BUSINESS

Speed of vehicles

Quiet village

Mobile phone reception

Internet and broadband

Small businesses

Parking

Access to the countryside

Bus services

Road Maintenance

Cycle paths

Speed humps/ traffic calming

HGV traffic

TRANSPORT, TRAFFIC AND BUSINESS WORKING GROUPS

Speeding

Traffic especially Church Lane and Barrow Hill

Parking

Parking in Village Street and Barrow Hill

Transport

To ascertain the needs of the village

Business

Broadband & phone providers; employment

SECTOR GROUPS

Community, Infrastructure and Amenities – Bob Houghton



COMMUNITY, INFRASTRUCTURE, AMENITIES

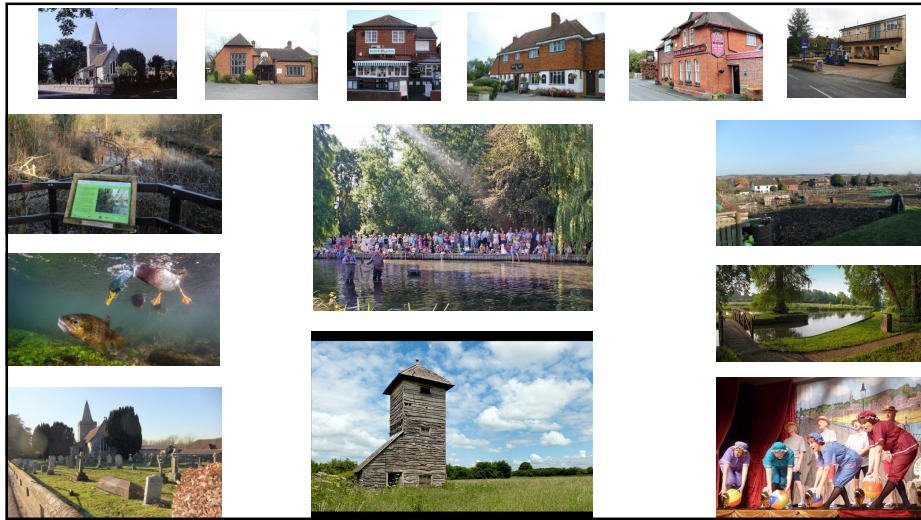
Shop/Post Office	Village Club	Scout/Guides
Allotments	Riverside Walk/Rest	Petrol Station
Church/Graveyard	Village Pubs	Youth centre
School	The Sheepwash	Education
Flooding	Recreation Ground	Crime
Activities/groups	Sewage problems	

COMMUNITY, INFRASTRUCTURE, AMENITIES WORKING GROUPS

Community Village identity, groups & associations, education, crime, antisocial behaviour

Amenities Recreation, allotments, open spaces, recycling, conservation field, population and amenities

Infrastructure Church/graveyard, flooding, sewage, utilities, village club, shop/post office, pubs, garage, water tower, golf club



SECTOR GROUPS

Housing – Peter Kiddle



HOUSING WORKING GROUPS

- New Housing** Numbers, settlement boundary, retirement and affordable housing, strategic gap
- Rural Character** Open space, rural atmosphere, landscape
- Housing Needs** Low cost, size, types, generic locations
- Visual Character** Housing estate, individual plots, conservation area, building styles and impact, sewage

HOUSING

Number of new houses	Types of new housing
Settlement boundary	Rented accommodation
Conservation area	Retirement housing
Listed buildings	Affordable Council housing
Gap between villages	Protect views
Building styles	Sewage problems
Rural atmosphere	

NEIGHBOURHOOD PLAN

United we stand, divided we fall

Questions or comments?



SECTOR GROUPS

Environment and Countryside – Geoff Scard

Housing – Peter Kiddle

Community, Infrastructure and Amenities – Bob Houghton

Transport, Traffic and Business – Ros Stockdale